

Our Products,
Services &
Solutions to
assist your
project



Alumasc Water Management Solutions

Premium products with premium service, providing proven solutions

For almost 90 years, Alumasc has been promoting the efficient use, retention, recycling and disposal of water. Under the Alumasc Water Management Solutions (AWMS) banner, customers benefit from a complete package of rainwater and drainage products that control the flow of rainwater throughout the entire building envelope; all supported by our unrivalled technical teams.

These well-respected solutions are delivered via established brands Alumasc Rainwater; Harmer Building Drainage; Wade Building Drainage and Gatic Civil Drainage & Access Covers. Together with the Skyline Architectural Aluminium range, they form the foundation of AWMS and present an unrivalled range of products and expertise.

The AWMS project portfolio spans the globe, including hundreds of high-profile schemes throughout the UK. You can view our case studies on our website: <https://www.alumascwms.co.uk/case-studies/>

“Our aim is to focus on high quality, environmentally responsible building products within the construction industry in order to deliver first-class customer service, technical support, long-term solutions and lasting relationships.”



Premium products for management of water originating inside or outside the building



By a combination of in-house manufacture and highly focused collaborations with other world class suppliers, AWMS has built up an unrivalled product portfolio spanning the water management sector. Suitable for both new building and refurbishment, and whether the building design is contemporary or traditional, Alumasc Water Management Solutions can provide appropriate product and system solutions to suit.



PREMIUM PRODUCTS

A constantly evolving range of quality proven, world class products and systems, fully accredited to the appropriate BS and EN standards.

TECHNICAL SUPPORT

We can offer the following technical services: Design Support, Specification support, Calculations and Installation/Maintenance advice.

NATIONAL BRAND-SPECIFIC SALES TEAM AND REGIONAL SUPPORT NETWORK

The AWMS 'Concept to Completion' process offers rainwater and drainage calculations, on-site surveys, take off and estimations.

APPROVED INSTALLERS:

We have a network of approved installers who are able to offer supply & fit options or fit only - project dependant.

BESPOKE MANUFACTURING

Across our manufacturing sites we have a range of technical and design teams, who not only work on product innovation, can design bespoke products to suit your project. One off items as well as longer production runs are available.

STATE-OF-THE-ART AND QUALITY:

- UK based, accredited production facilities, ensuring standards remain high across all product ranges.
- A carefully developed and nurtured supply chain for world class products to complement the in-house manufacture and to ensure a fully rounded and comprehensive offer for exteriors and drainage.

Quality and Sustainability

In addition to complying with environmental legislation, Alumasc is committed to developing its own measures to limit the adverse effects of its activities on the environment. To this end, Alumasc operates an environmental policy that fully integrates all aspects of company activities. We proudly hold the London Stock Exchange Green Economy Mark, which is awarded to companies generating 50% or more of their total annual revenues from products and services that contribute to the global green economy.

QUALITY

Alumasc operates a quality management system which is independently audited to ISO 9001: 2015.

SUSTAINABILITY

Alumasc actively pursues sustainability in the full range of products it offers and, with its partners and its suppliers, is committed to putting consideration for the built and wider environment at the core of all aspects of current business and future development.

Alumasc's manufacturing sites are audited to the ISO 14001:2004 Environmental Management Standard.

BREEAM STANDARDS

The BREEAM points system promotes the use of materials with a proven sustainable message and allows designers to differentiate between products with true ecological credentials and those not achieving the benchmark.

Aluminium Rainwater goods and Skyline Architectural Aluminium systems are part of the range of high scoring Alumasc solutions. Promotion of these responsibly sourced materials brings clarity to the specification process thus achieving the desired effect of minimising the environmental impact of the construction process.

BRITISH BOARD OF AGREEMENT CERTIFICATE (BBA)

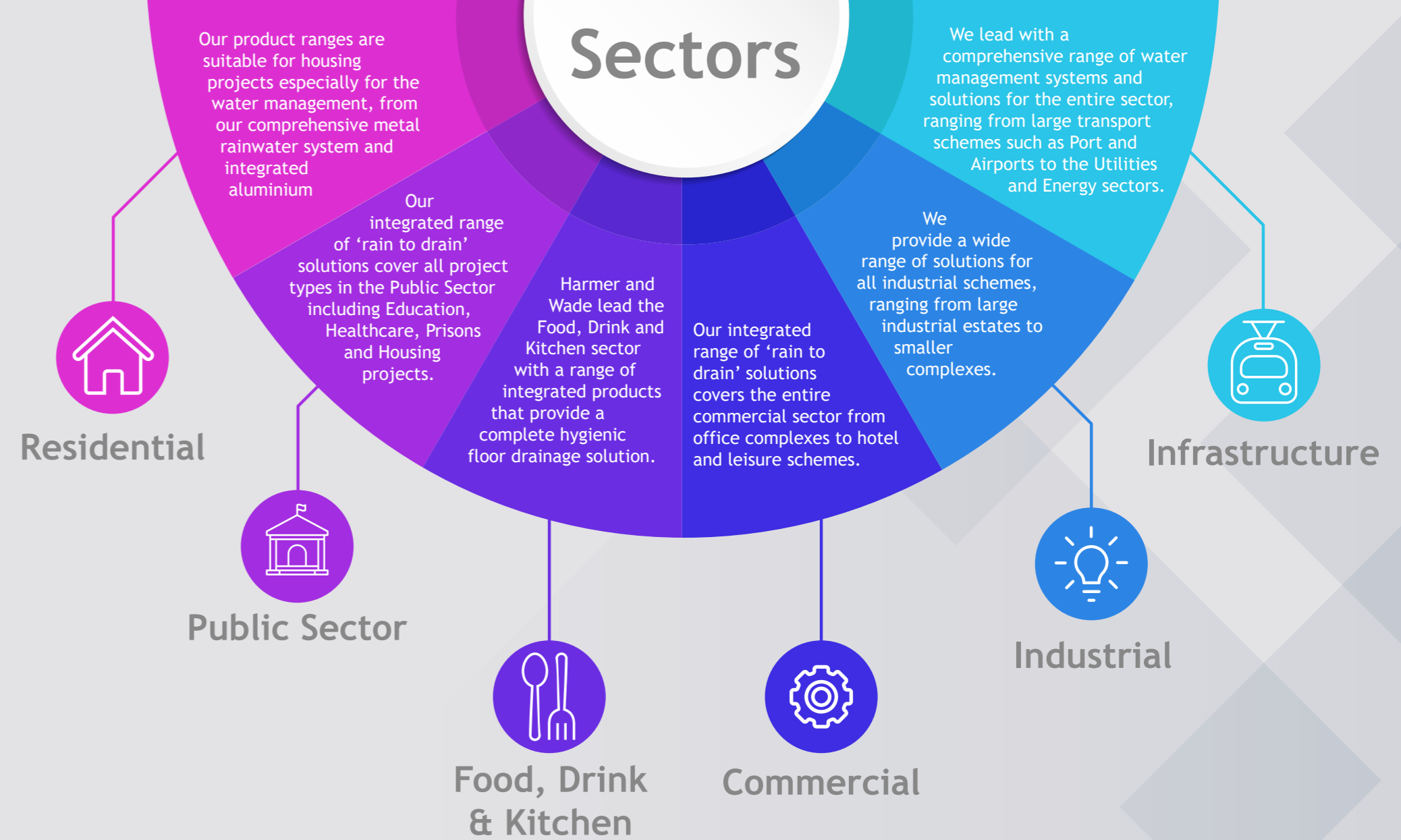
Certificate No. 86/1671 for aluminium rainwater systems and for the polyester powder coating process of our aluminium rainwater goods.

STANDARDS

All products manufactured at Alumasc are tested and certified to the appropriate BS and EN standards.



Sectors





Fascia & Soffit

The Skyline Fascia Soffit system is an architectural favourite, offering creative freedom and versatility combined with the high performance and sustainability of aluminium. A range of profiles and sizes is available, and bespoke designs can be engineered to suit any design challenge. Fascias can be projected direct from the elevation or used in combination with the soffit system to give varying eaves overhang. All elements are manufactured from superior polyester powder-coated aluminium.



Copings

Skyline Copings are a popular capping solution for upstands and parapet walls. Easy to install and maintenance free, they are available either with a flat profile, or sloping to direct rainwater back onto the roof surface. Standard sizes are available to suit the parapet wall width, with the most common sizes held in stock. Bespoke sizes are available on request. The system is suited equally to new build and retrofit projects.



Column Casings

Skyline Aluminium Column Casings have been designed to transform unsightly building elements such as service ducts, wiring, timber work and unattractive concrete, into sleek, contemporary design features. They can be fitted over exterior or interior columns, to transform the aesthetics of any building or interior. They are highly durable, maintenance-free, and offer an extensive choice of colours. The system represents a sound, sustainable choice for both new build and retrofit projects.



Window Surrounds

Skyline Aluminium Window Surrounds offer a wide range of options to provide the final, striking detail to any building exterior. There is a choice of solutions available within the Window Pods range, for standard, multi-storey or corner building applications, and bespoke designs can be manufactured for more challenging projects. All systems can be supplied in any RAL colour to ensure a perfect match to any existing exterior building features.



Door Canopies

Skyline Architectural Door Canopies offer effective weather protection for external entrances, doorways and pathways, whilst adding visual interest to the building façade. The sleek, aluminium canopies are available in a choice of standard options, with the opportunity for bespoke solutions in non-standard specifications. Components are precision engineered for a perfect fit, and integrated gutter options, side panels and lighting can be incorporated. Modular options can be linked for increased length of cover.



Planters

Skyline Architectural Aluminium Planters are designed for living plants and shrubs, helping to green the built environment where areas of natural planting are limited or unavailable. They feature a fully folded top edge to provide strength and stiffness, creating a smooth overall appearance with no sharp edges. They can be installed individually in small spaces, or in combinations of varying heights and lengths to create a dramatic effect in larger spaces.

SKYLINE
ARCHITECTURAL ALUMINIUM

Skyline Architectural Aluminium represents a range of systems with performance and design at its core. It has been the system of choice for countless projects, from high-profile commercial and public buildings, to leisure facilities, residential housing developments and individual private residences.

The Skyline range is manufactured to exacting standards, combining an ideal rainwater solution for crucial roofing and gutter interfaces, with robust exterior design features that not only excel in appearance, but also in terms of functionality.

Manufactured from superior, BBA approved powder-coated aluminium, which is 100% recyclable, all products offer sustainable, high-performance weatherproofing, suitable for both contemporary and traditional building design.



ALUMASC[®]
RAINWATER
 GUTTERS AND DOWNPIPES

Alumasc Rainwater Systems is the UK's market-leading manufacturer of metal gutters and downpipes, and the only UK manufacturer to offer systems in Aluminium, Cast Iron, Galvanised Steel, Copper and Zinc.

High-performance systems are available for both traditional and contemporary buildings, with BBA approved powder coated finishes and bespoke design options.

Alumasc's premium product offer is supported by a nationwide network of approved installers and technical expertise. Our ever-developing online resources offer comprehensive data for specification and installation of all products and systems. This is further supported by proactive support led by specialist area managers, using the latest CAD and calculation technology.



Cast Iron

Apex Heritage Cast Iron is a traditional sand cast rainwater system offering a choice of profiles and sizes, appropriate to heritage and period architecture. Bespoke manufacture is available to suit any project. 100% recyclable, strong and durable, cast iron offers a life expectancy in excess of 40 years. The system is finished with high-quality primer and a 'Factory Certified' top coat in a range of standard RAL colours, with others available on request.



Aluminium

Alumasc Aluminium Rainwater Systems combine modern engineering and high-performance materials to offer unrivalled solutions for fast track newbuild or refurbishment projects. Suitable for both traditional and contemporary building design, the range includes Cast, which is often specified to replicate cast iron, Pressed, and Extruded systems; all of which are lightweight, corrosion resistant and low maintenance. All options can be finished with BBA approved powder coatings in a wide choice of colours.



Steel

The Infinity Steel Range is a lightweight, non-corrodible alternative to uPVC systems, suited to traditional and modern buildings. It is inherently resistant to UV therefore will not fade, its life-cycle and maintenance costs are low, and it is 100% recyclable. The system offers box or half-round gutter profiles for maximum flow rates and capacity. Dry joints negate the need for silicone sealants, whilst rubber-sealed connectors aide quick and easy installation.



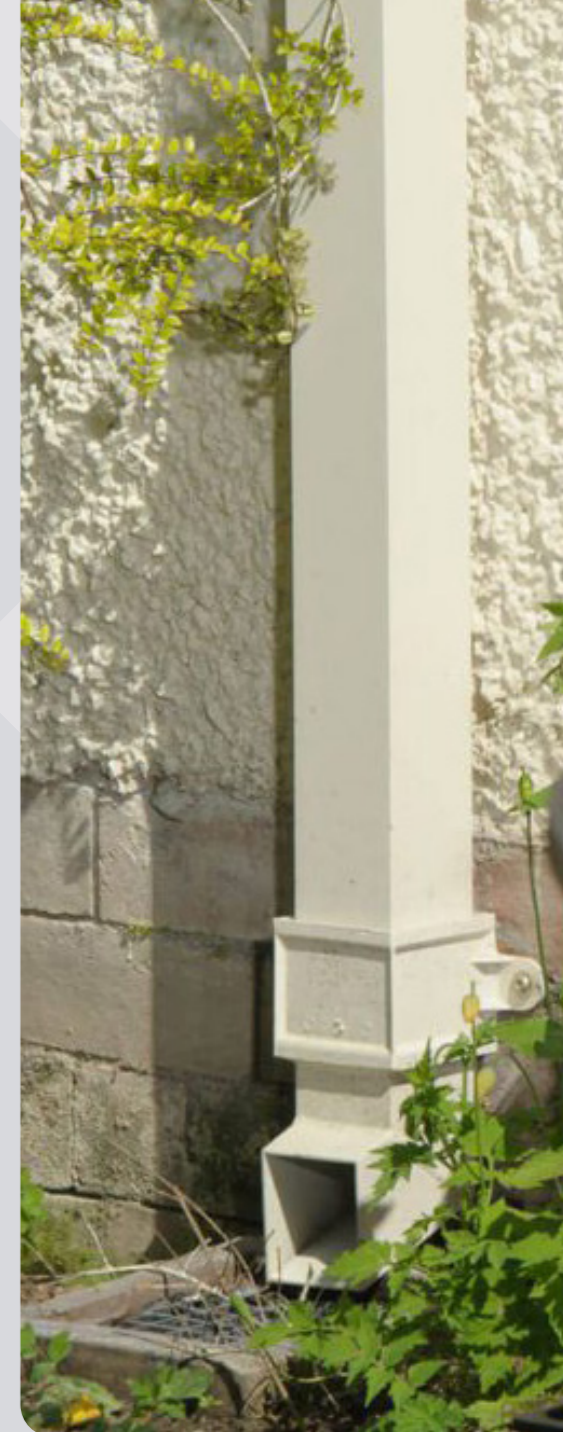
Copper

Infinity Copper presents a bold design choice that redefines the aesthetic of any building. This timeless rainwater system is crafted both for looks and durability, resulting in an elegant, superior rainwater system. Lightweight, durable and naturally non-corrodible, the system offers a half-round gutter profile and circular downpipes, with quick and easy installation. Copper forms a natural surface layer called patina, which oxidises over time, changing colour beautifully with age.



Zinc

As part of the Infinity range, Quartz Zinc and Natural Zinc rainwater systems both represent a cost-effective alternative to uPVC. Quartz Zinc is inherently resistant to dirt and debris, ensuring consistent flow rates, and is pre-weathered which means it naturally maintains its colour. Natural Zinc exhibits self-healing properties when damaged or scratched, ensuring a consistent finish that will not change over time. Both are available with half-round gutter profiles and circular downpipes.





Roof Outlets

The Harmer Roof Outlet range is a high-performance drainage system, suitable for all types of flat roof application, including balconies and terraces. The lightweight aluminium roof outlet offers the option of threaded spigot adaptors to facilitate the A1 fire-rated connection of Harmer Roof AV and threaded aluminium rainwater outlets to all types of pipe systems. For load bearing applications, Cast Iron outlets are also available. Both aluminium and cast iron are 100% recyclable.



SML Cast Iron Drainage

Harmer SML is a lightweight, cast iron above- and below-ground soil and waste system, which is also suited to rainwater installations when used in conjunction with Harmer Roof Outlets. It offers a comprehensive range of fittings and accessories, for a whole-building solution for soil, waste and rainwater drainage. Harmer SML is A1 fire-rated non-combustible and will not contribute significantly to a fire. It is easy to install and provides efficient access for maintenance.



Modulock Pedestals

The Harmer Modulock Pedestal System is a range of fully engineered, raised pedestals designed to create level flooring in any application where sloped, stepped or irregular surfaces present a challenge. They are manufactured from robust polypropylene, and offer self-levelling or fixed head options, both of which are designed for use with paving slabs or timber and sheet decking. A1 fire-rated non-combustible options are also available for both decking and paving applications.



Floor Drainage

Harmer Cast Iron Floor Drains present a range of drain bodies from shallow sump to deep sump. Floor drain bodies are available with three connection types and thirty grate and bezel options in a choice of finishes. Their innovative design facilitates quick and easy installation, efficient maintenance, and ease of access to the trap. A range of cast iron floor drain assemblies is also available, ideally suited to composite or asphalt floor applications.



Modular Linear Drainage

The Harmer Modular Linear floor drainage channel, is a high-performance stainless-steel system offering four grating profiles designed to handle load class A15 to C250 in areas of pedestrian and light vehicular traffic. The range presents options for applications in food processing, brewing, bottling and canning, chemicals and pharmaceuticals, schools and leisure facilities, and human and animal health care. This is a robust, dry-jointed system, offering ease of installation and minimal maintenance.



Shower Drains

Harmer Shower Drains are available in cast iron, stainless steel, aluminium and ABS plastic compound to meet the demands of virtually any interior drainage application within any sector. All products are precision engineered to set a new standard in quality, versatility and performance. Impact and corrosion resistant, lightweight and durable, the entire range offers impressive flow rates and a choice of grate designs and finishes to suit any flooring type.



Harmer Building Drainage is a comprehensive product range for the complete management of water inside and outside of the building. The use of high-performance materials ensures superior corrosion resistance and durability, whilst allowing designers and contractors to realise the design, function and installation benefits of fully integrated drainage solutions.

Harmer products are supported by comprehensive literature and hands-on technical expertise. Alumasc's Drainage Managers provide technical and design advice from the outset, following each project through to installation and recommendation of appropriate maintenance regimes.

Harmer is the first choice for specification within many sectors, including retail, commercial, leisure, residential, food processing and pharmaceutical.

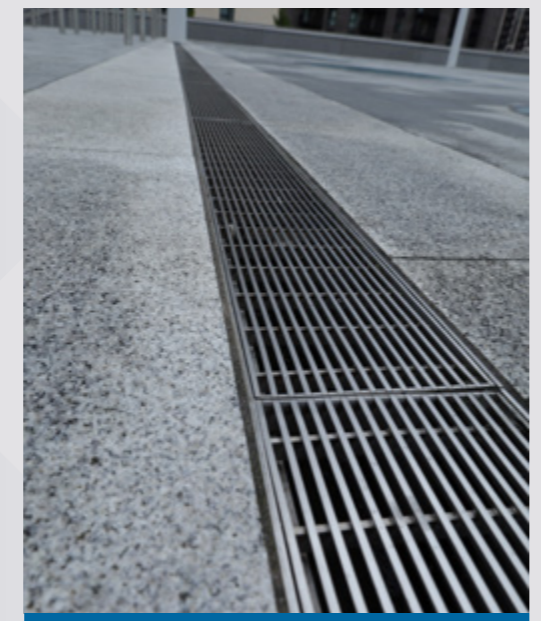




Wade has been in the building industry for over 60 years. An ongoing programme of research and development has seen our range of class-leading products expand to accommodate the growing demands of modern construction. The result is a wide range of solutions providing years of reliable service on many differing drainage applications.

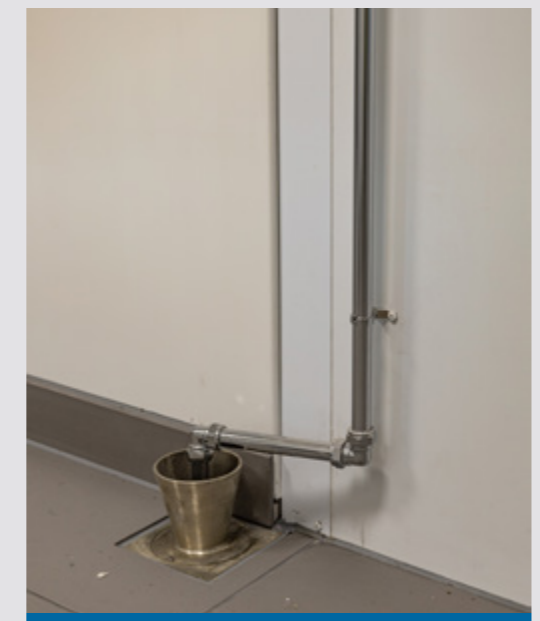
Our state-of-the-art facility in Halstead boasts consistently high standards of product design, manufacture and distribution, and allows us to provide unrivalled technical support from design stage through to project completion.

As project requirements evolve, Wade continues to push the boundaries of product development, maximising on decades of industry experience.



Linear Drainage

Wade Linear Drainage is a range of stainless steel channels designed to suit applications involving large areas of vinyl, screed or resin flooring, and block paving. They are also suitable for unfinished flooring areas in factories, plant rooms and service areas. Hidden Linear Slot Channels are a discreet option ideal for barefoot areas such as swimming pools; and bespoke options can be manufactured to meet challenges such as curved or tiled areas.



Floor Gullies

Wade Floor Gullies are available in adjustable or fixed height options to suit a wide range of demanding applications. They are widely used in areas where high corrosion resistance is required, such as plant rooms, food preparation areas, showers and swimming pools. The range represents ultimate design flexibility with various gratings and bodies that are interchangeable to fit most drainage applications. A fully bespoke service is available for non-standard applications.



Rodding Eyes

Rodding Eyes are intelligently designed to provide easy access and maintenance for underground drainage pipes. They offer adjustable height settings for precise alignment with the floor surface. Circular and square profiles are available for use in tiled, resin, concrete and flexible sheet flooring. Three robust metal options, cast iron, nickel bronze and stainless steel, ensure a solution for any application, including heritage projects and those requiring high corrosion resistance.



Roof Outlets

Wade Roof Outlets represent a comprehensive product range that meets the requirement of virtually any roofing project, including: balconies; green, brown and blue roofs; car parks; inverted, insulated and cold roof applications. Options are available dependent on roof construction, finish, drainage system and designated function, e.g., garden or parking. A choice of low-maintenance, highly robust metals is available to provide lasting performance and to blend seamlessly with the roof and its surroundings.



Grease / Sediment

Wade stainless steel grease converters and sediment interceptors effectively deal with potential blockages in drains. The Grease Converter is designed for commercial and industrial premises where food is prepared or processed. It separates and breaks down grease using micro-organisms. The Sediment Interceptor is used where solids like food scraps, hair, plaster, etc., are discharged into drain lines. Material is captured in a filter which can be emptied at regular intervals.



Water Points

Wade Non-Freeze Water Points are WRAS approved to provide an external water source for plant watering, area cleaning, vehicle wash down, etc. The product is installed with the valve seal inside the building, whilst the controls and hose connections are outside. When the valve is off, water drains out from the unit to avoid freezing. They can also be supplied with a wall box with optional locking cover to deter unauthorised access.



Access Covers

Gatic Access Covers are used in airports; sea ports; data centres; water, gas and electricity facilities; highways and tunnels. They provide easy access to underground services, are gas-, air- and watertight, and remain completely stable under traffic. The covers are capable of withstanding heavy-duty loads up to and including loading group F900. A variety of sizes, configurations and options ensure a solution for even the most punishing of modern industrial environments.



Slotdrain

Gatic Slotdrain surface water drainage systems, offer five categories of channel, providing a solution for any conceivable combination of drainage and loading demand; from landscaping projects through to airports and supermarket car parks. Slotdrain's unique hexagonal profile was developed by Gatic to handle varying volumes of rainfall with equally high efficiency. Channels come in various sizes and have an accompanying range of accessories and fittings to achieve total design flexibility.



Kerbdrain

Manufactured from 70% recycled polymers, Gatic Kerbdrain is a heavy-duty combined kerb and drainage system (CKD) that provides efficient drainage on potentially any surface or structure with a kerb edge. It is commonly used in retail parks, drive-throughs, distribution yards, residential housing developments and along highways. The system comprises single, solid, monolithic units, which negate the need for costly handling equipment, present quick installation times, and reduce the risk of personal injury.



Oil Water Separators

Gatic Bypass separators are used in 'low risk' environments, like car parks, where the risk of a significant oil spillage is small. Gatic Full Retention separators are used where there may be a 'high risk' of a significant fuel spillage, such as vehicle workshops. Both options offer exceptional durability, impact resistance, and are guaranteed to be watertight, ensuring they withstand the most rigorous conditions during their service life.



Established in 1928, Gatic is a global leader of surface water drainage and engineered access covers, whose systems are well recognised for quality and performance.

In the current climate of more frequent rainfall, it is increasingly important for our infrastructure to be protected from the build-up of excess rainwater. Gatic products have been instrumental in this process for almost 100 years, ensuring the capture, control and return of run-off back into the natural water cycle.

The full range of Gatic drainage products can be found across many prestigious projects worldwide, and is supported by a network of technical expertise combining decades of industry experience.



Building Safety and Fire Classification

Understanding product fire classifications within the construction industry is crucial for compliance with current legislation and to ensure products are suitable for their application.

With recent changes in legislation regarding the installation of products into the building envelope, such as BS 8579:2020 and the Building Safety Act 2022, identifying the combustibility of a product is a key factor in its specification. Products being installed should not provide a medium for spread of fire, nor should they propagate fire downwards by means of falling droplets or debris; ultimately, they should minimise the risk to the building and its occupants.

Building Safety Act 2022

The Act enforces compliance to Building Regulations restricting the use of combustible materials in the construction of buildings over 11m and reinforces the personal responsibility of all parties involved in the construction process.

UK Fire Classification

The polyester powder coating used by AWMS has been tested in accordance with the protocols defined by BS476: Fire Tests on Building Materials & Structures. The Parts of BS476 applicable to PPC are:

- Part 6: This gives the Fire Propagation Index which is a measure of contribution to fire growth.
- Part 7: This is a method of measuring flame spread along a surface. The AWMS PPC achieves a Fire Propagation Index of <12 and a sub-index rating <6 (Part6) and a Class1 Rating for flame spread (Part7). Under UK Building Regulations - Fire Safety Approved Document B, these results meet the criteria for the highest safety performance level, Class 0.

EU Fire Classification

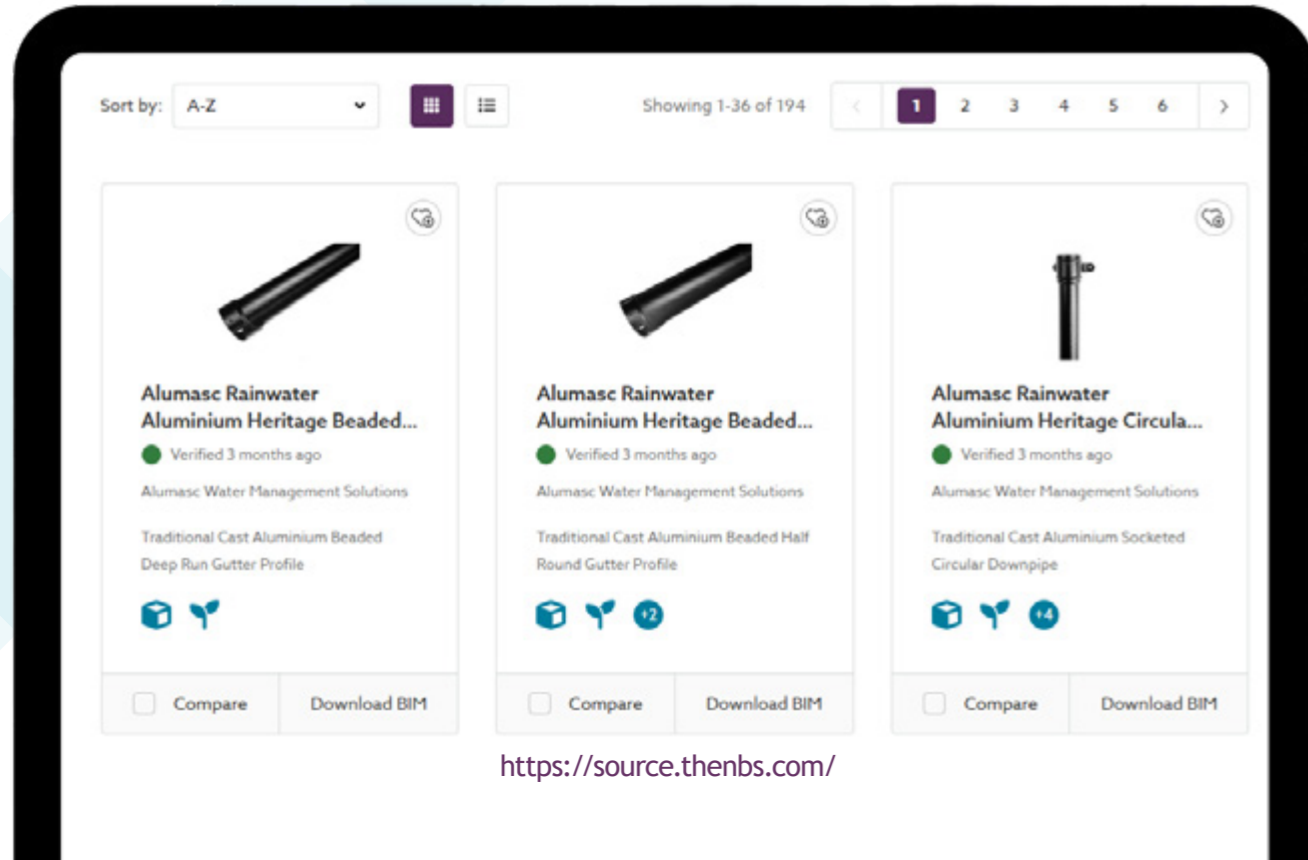
Fire testing and reports issued by external independent accredited laboratories certify that our range of PPC products are classified in the agreement with European Norm EN13501-1 as: A2L-s1, d0 This means: A2L - Noncombustible - no contribution to fire; s1 - Lowest level for smoke emissions; d0 - Lowest level for flaming droplet/particles.

Crucial Compliance for Building Safety and Legislation



NBS Specification

For over 50 years, NBS has helped architects produce their specifications and connect them with manufacturers. NBS Source helps specifiers select products confidently and efficiently. In collaboration with NBS Source, Alumasc products are listed on the NBS library to allow architects and specifiers quick and easy access to the correct product specification and respective clauses.



<https://source.thenbs.com/>



Scan to visit
NBS Source

CPD Seminars



We are committed to Continuing Professional Development and offer a range seminars approved by the Royal Institute of British Architects and the CPD Certification Service.



1. Architectural Aluminium - A Complete Guide to Design & Specification



2. Rainwater Disposal from Pitched Roofs - Design & Specification



3. Internal Rainwater Drainage - Design & Specification



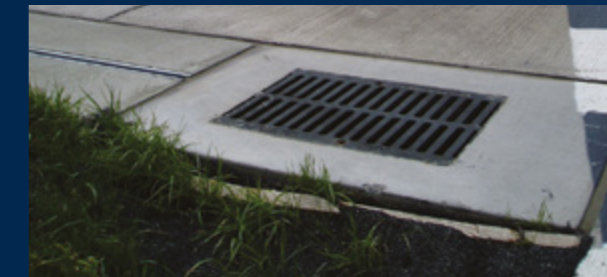
4. Soil & Vent Drainage - Design & Specification



5. Internal Floor Drainage - Design & Specification



6. Surface Water Management - External Linear Drainage, Design & Specification



7. A Guide to Access Covers - Design & Specification

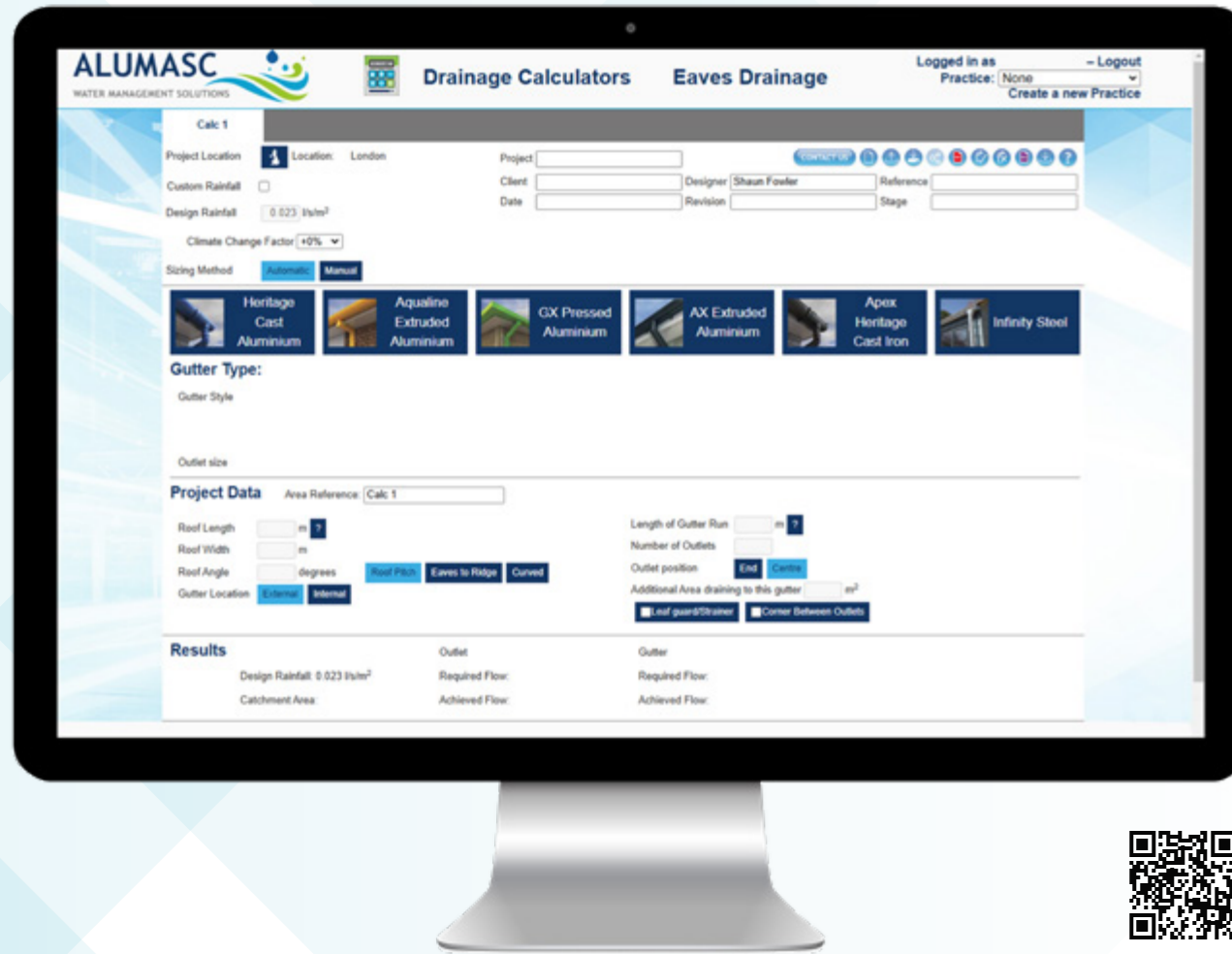


We can offer seminars either in your place of work, or virtually at a time that suits you.

Scan to book, or email:
marketing@alumascwms.co.uk

Drainage Calculator

Architects and building services engineers can now design and quantify all of their rainwater drainage requirements using Alumasc's dedicated free online drainage calculation software.



Scan the QR code and register for full access or visit the website: <https://calculators.alumascwms.co.uk/>

Key Features

- In accordance with BS EN 12056-3:2000
- Rainfall map to define exact location rainfall data.
- Ability to import FEH data sets.
- Online login with ability to save projects.
- “Practice” feature allowing you to share and view calculations.
- Regular updates and new features.
- Links to NBS Specification, detailed drawings and help pages.
- Export to PDF and Excel Calculation Document.

Technical and Customer Service

With specialist knowledge across the water management cycle, we offer a full technical and support service as standard for all projects. Our ‘Concept to Completion’ process is underpinned by a solid company infrastructure which offers the following:

- national brand-specific sales team and regional support network
- in-house technical team
- design team to fulfil bespoke design requirements
- rainwater and drainage calculations and on-site surveys
- take-off and estimations
- three UK manufacturing plants
- in-house, BBA approved powder coating facilities
- unrivalled dedicated UK technical and after-sales support
- a network of approved suppliers and recommended installers covering the UK & Ireland

Online Calculator

Our leading Drainage Calculator allows architects, specifiers and engineers to design and quantify all their Rainwater Drainage requirements.

- category 2 and 3 Flat Roof Drainage linked to local rainfall data
- eaves drainage gutter sizing and pipe calculator, for cast and contemporary gutter types
- ability to import FEH data sets for client's personal use
- no installation required, just an internet connection
- share and view calculations with their colleagues
- links to NBS Specification, detailed drawings and help pages

“Full support throughout our concept to completion process”



Integrated **Water** **Management Solutions** for a Sustainable Future

Skyline, Rainwater & Harmer

Telephone
+44 (0) 1536 383 810

General Enquiries
info@alumascwms.co.uk

Estimating
estimating@alumascwms.co.uk

Technical
technical@alumascwms.co.uk

Customer Services
customerservices@alumascwms.co.uk

Station Road
Burton Latimer
Kettering
Northamptonshire
NN15 5JP

Wade & Gatic

Telephone
+44 (0) 1787 475 151

Customer Services
wadesales@alumascwms.co.uk

Wade Technical
wadetech@alumascwms.co.uk

Gatic Technical
gatictech@alumascwms.co.uk

Third Avenue
Halstead
Essex
CO9 2SX



+44 (0) 1536 383 810
info@alumascwms.co.uk
www.alumascwms.co.uk