

**GATIC®**

**DRAINAGE & ACCESS COVERS**

Uniclass

L731

CI/SfB

(52.5)

lh

**GATIC®** Composite. Solid and Vented  
Composite Access Covers Using  
ThruBeam® technology.

2017



**Composite**



## Product Features and Benefits

Gatic Composite is a comprehensive system of single duct and multispan access covers and frames for use in pedestrian areas where an anti-slip, light weight, lockable and aesthetic solution is required in environments up to B125 loading.





# Why Composite.

## Cover types

Gatic Composite covers are lightweight and extremely strong, which reduces lifting risks to installers and inspectors. This is a major advantage of composite materials.

## Performance

Our composite covers have been tested independently for anti-slip properties in both dry and wet conditions.

## Secure and vandal resistant

Gatic covers are lockable and cannot be removed without the correct lifting key so unauthorised removal is virtually impossible.

## Loadings

All Gatic Composite covers will withstand test load and maximum permanent set criteria specified in BS EN 124: up to B125.

## Secure Support

The clear opening width between supporting frames is bigger than the pit/chamber design to allow for minor deviations in pit construction dimensions.

## Removable Support Beams

Supporting beams in Composite Multispan units are easily removed with appropriate lifting equipment for access to the total chamber area. Beam wallboxes do not project into the chamber opening.

## Finishes

**Colours available** - Black, Grey, Blue, Green and Red. Other colours available on request.

**Frame work** - Galvanised steel.

## Installation

Consignments of Composite units are supplied with comprehensive installation instructions.

## Environmental commitment

Responsibility towards the environment is our primary concern.

To meet these requirements we have an integrated Quality (BS EN ISO 9001) and Environmental (BS EN ISO 14001) Management System which encompasses the design, manufacture and management systems within the company and ensures our commitment to continuous environmental improvements regarding the manufacture and design of all our products in the following ways:

- Minimise environmental impact
- Commit organisational resources to energy management
- Reduce energy costs
- Give high priority to energy efficient investments
- Consider life cycle energy costs for all new projects
- Minimise CO<sub>2</sub> emissions year on year
- Use energy from sustainable resources wherever possible

To achieve these goals we have put in place the necessary systems and controls to meet demanding environmental targets and to make sure that these are maintained for the future benefit of the environment and our customers alike.

## Gatic services

Gatic offers a full support service to specifiers and contractors, including Computer Aided Design. AutoCAD compatible details of all Gatic products are available. Please consult our technical department for assistance.

In view of our commitment to product improvement, we reserve the right to alter designs without notice. Design changes will not adversely affect the performance or loading capability of our products.

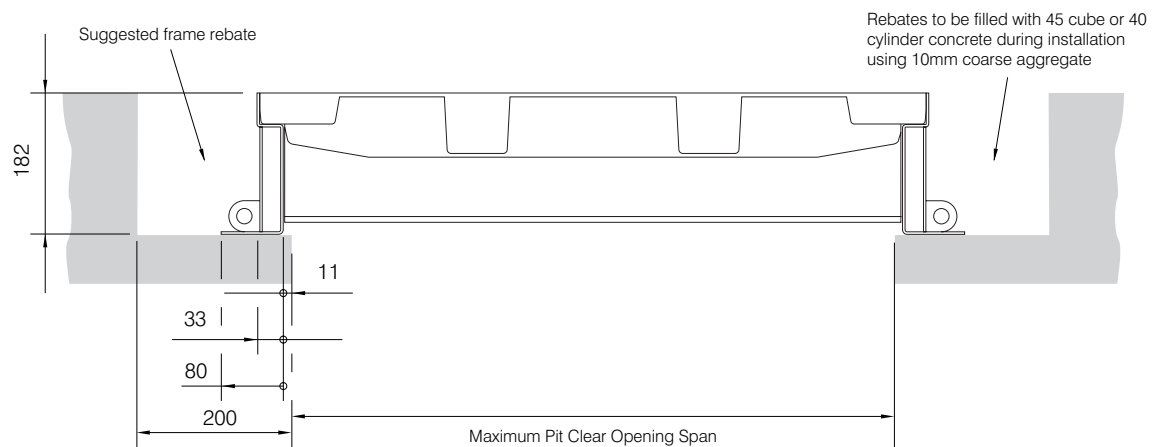
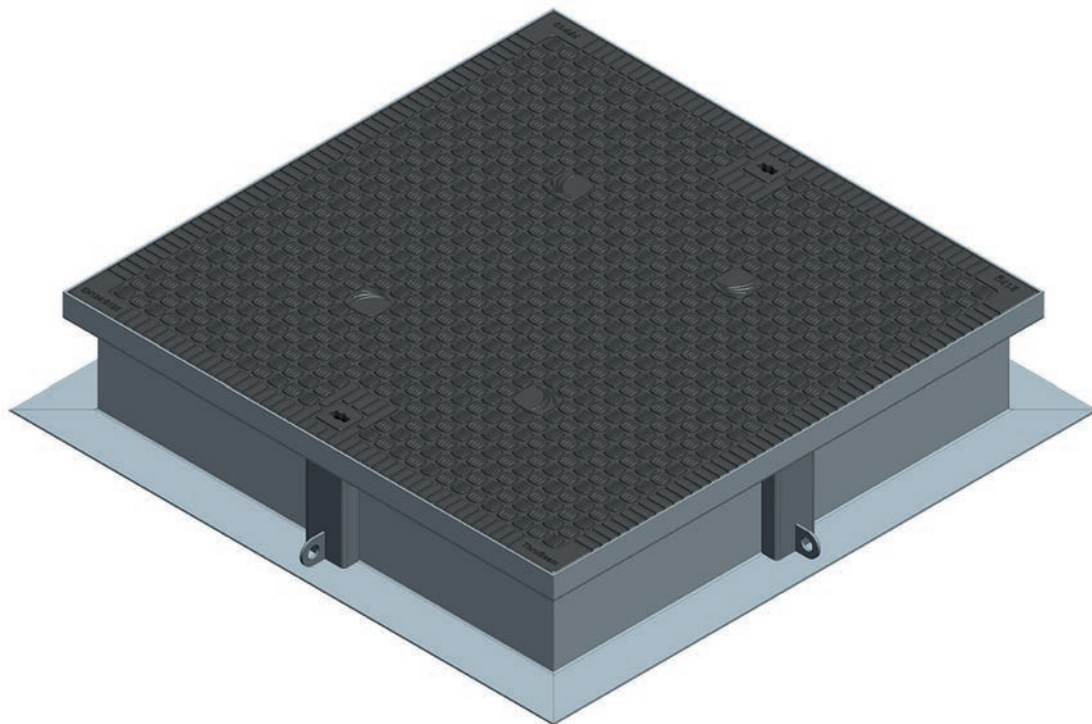


# GATIC® Composite

## Single Covers and Frames

Suitable for 3 tonne slow moving pneumatic wheel load. Cover test load - 125kN

Pit clear opening sizes L x S (mm)	Cover type
450 x 600	COMP
600 x 600	COMP
800 x 800	COMP





# Duct & Trench Covers and Frames

Suitable for 3 tonne slow moving pneumatic wheel load. Cover test load - 125kN

Pit clear opening spans (mm)	Cover type
600	COMP
800	COMP

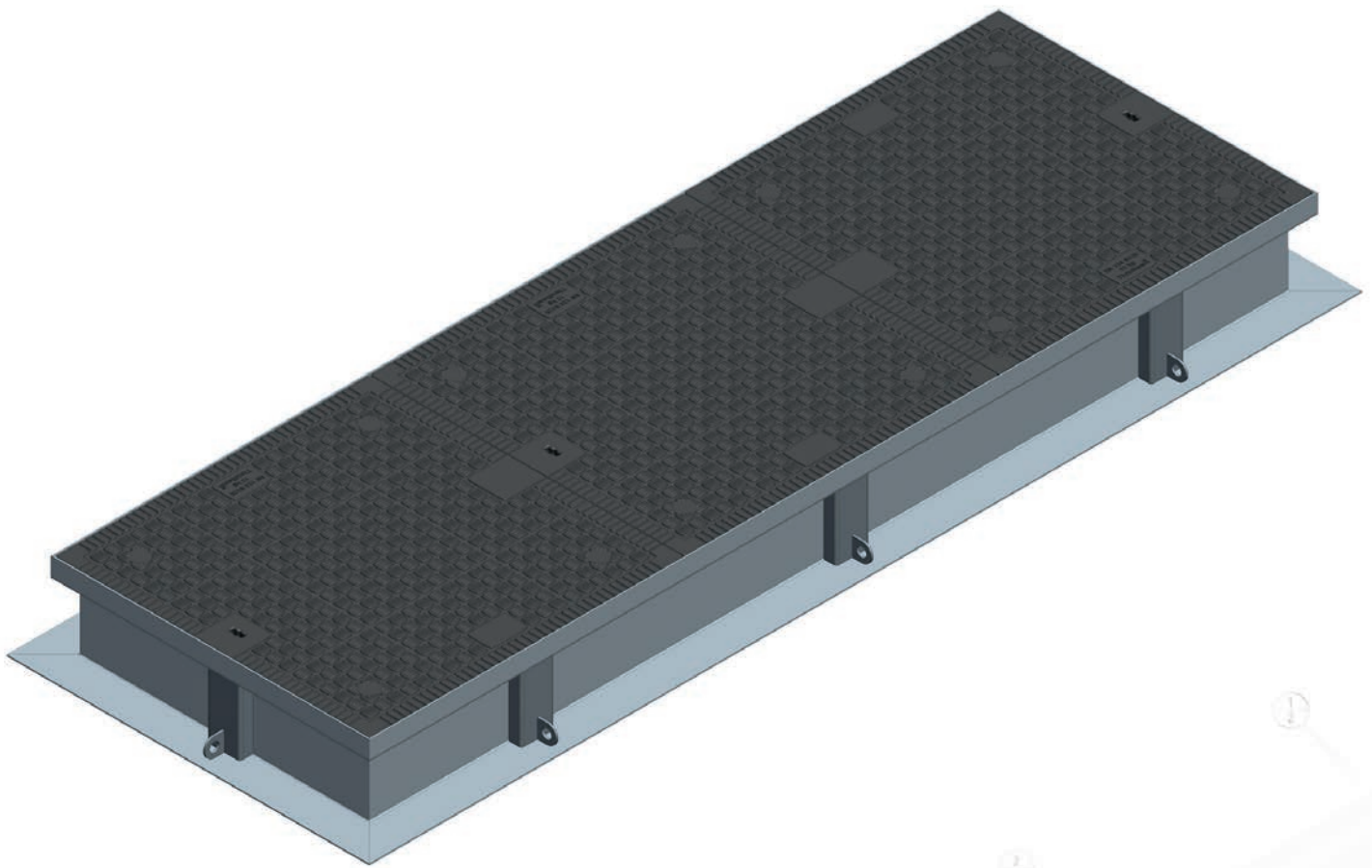
## Gatic Composite

Gatic Composite covers can be supplied to cover ducts or trenches as straight runs.

Pit clear opening spans (mm)	Cover type	Standard Pit clear opening length										
		940	1090	1240	1450	1600	1640	1750	1900	1960	2110	2260
600	COMP	2	2	2	3	3	-	3	3	4	4	4
800	COMP	-	-	-	-	-	2	-	-	-	-	-

Pit clear opening spans (mm)	Cover type	Standard Pit clear opening length									
		2410	2470	2500	2560	2620	2770	2920	3070	3220	3360
600	COMP	4	5	-	4	5	5	5	5	5	-
800	COMP	-	-	3	-	-	-	-	-	-	4

The number shown indicates the quantity of cover parts.



## Multispan Covers and Frames

Suitable for 3 tonne slow moving pneumatic wheel load. Cover test load - 125kN

### Specification

Below is sample specification information and notes for Multispan composite covers and frames.

---

#### Loading group Gatic B125

3 tonne slow moving pneumatic wheel load – test load 125 kN.

---

#### Materials

Hybrid resin construction.

Frames galvanised to BS EN ISO 1461.

---

#### Finishes

Removable supporting steelwork and side frames are supplied with a galvanised finish.

---

#### Surround concrete by customer

Concrete strength, using 10mm coarse aggregate, to be:

45N/mm<sup>2</sup> for a test cube of 150mm or

40N/mm<sup>2</sup> for a test cylinder of 150mm diameter x 300mm high.

---

#### Installation

In accordance with instructions supplied by Gatic.

---

To specify use size and description format as follows:

#### Composite Multispan covers and frames    Cover type COMP

Multiple access covers with removable beams.

.... in no. .... (length) x .... (span) mm pit clear opening galvanised multi span cover and frame.

Composite Type Composite Cover in .... parts complete with

.... in no. .... x .... mm galvanised removable support beam spanning the .... (length) mm way.

Suitable for Loading Group B125 – 3 Tonnes Slow Moving Wheel Load (pneumatic tyre).

Standard pit clear opening sizes are shown on Page 7.



# Multispan Covers and Frames

Suitable for 3 tonne slow moving pneumatic wheel load. Cover test load - 125kN

## Product Selection

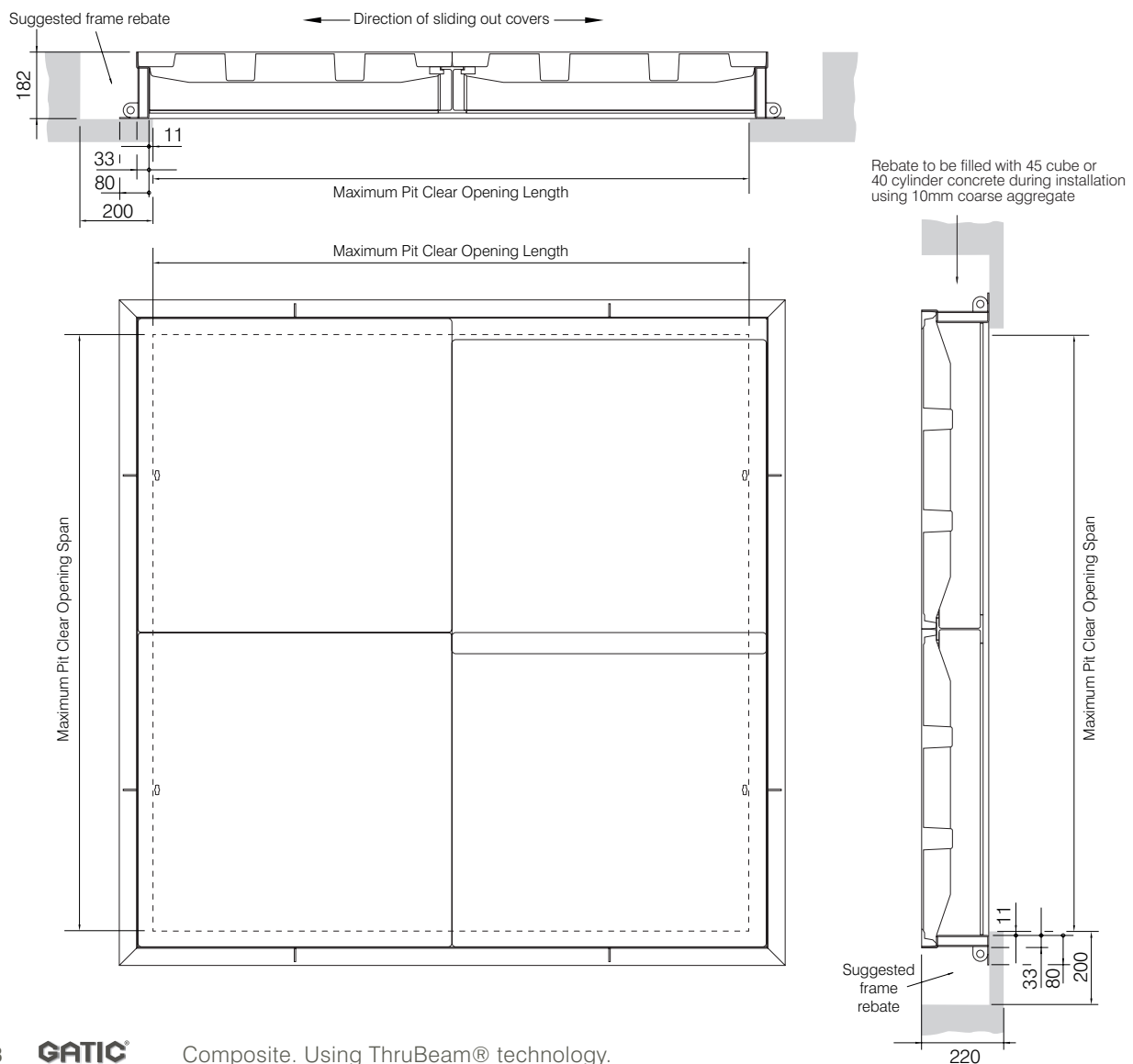
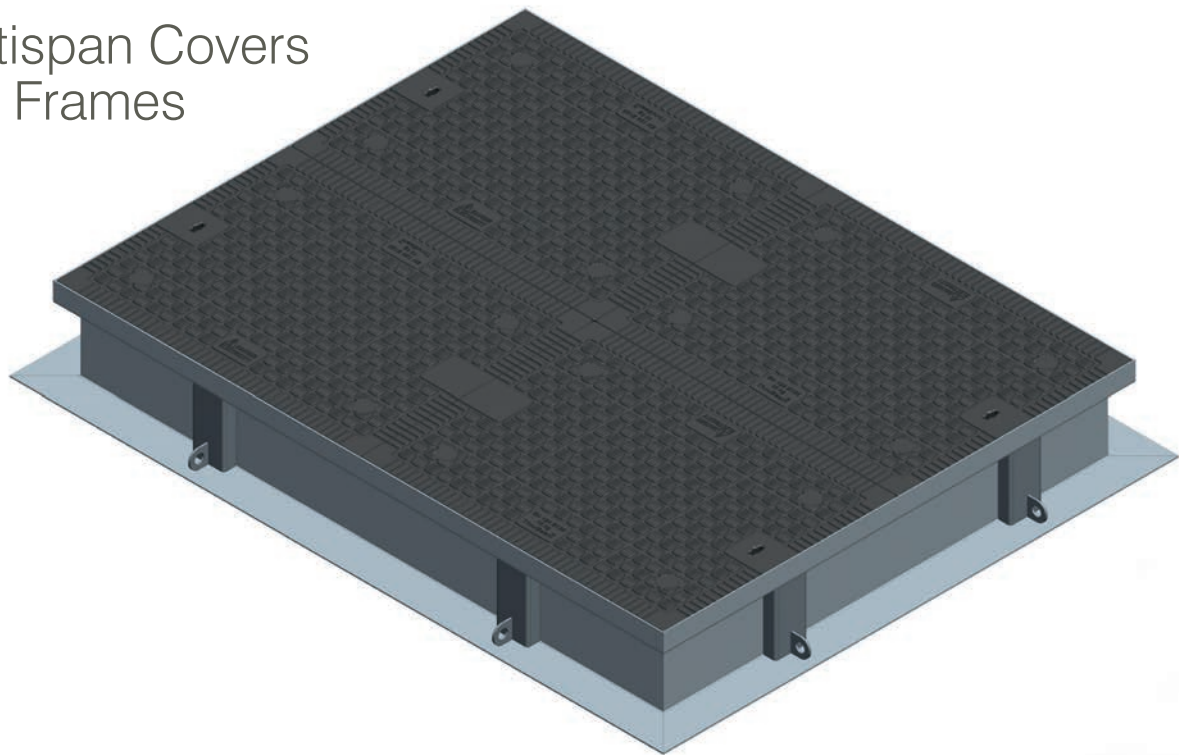
Refer to the table to identify which cover and beam configuration you require against pit clear opening length (L) and pit clear opening span (S). All dimensions are in millimetres.

Pit clear opening length (L) mm		Beam centres (mm)	
2 parts			
1240	1640*	A	E
2 parts 3 beams	940	BM6045	BM6045
	1090	BM6045	BM6060
	1240	BM6060	BM6060
	1640*	BM8080	BM8080
4 part (2x2) recessed multispan cover with 3 removable support beam		* For units with length or span dimensions 1640, 2500 or 3360 please refer to Gatic	
3 parts 5 beams	1450	BM6045	BM6045
	1600	BM6045	BM6060
	1750	BM6045	BM6060
	1900	BM6060	BM6060
	2500*	BM6060	BM6060
		BM8080	BM8080
6 part (2x3) recessed multispan cover with 5 removable support beams		* For units with length or span dimensions 1640, 2500 or 3360 please refer to Gatic	
4 parts 7 beams	1960	BM6045	BM6045
	2110	BM6045	BM6045
	2260	BM6045	BM6060
	2410	BM6045	BM6060
	2560	BM6060	BM6060
	3360*	BM6060	BM6060
		BM8080	BM8080
		BM8080	BM8080
8 part (2x4) recessed multispan cover with 7 removable support beams		* For units with length or span dimensions 1640, 2500 or 3360 please refer to Gatic	
5 parts 9 beams	2470	BM6045	BM6045
	2620	BM6045	BM6045
	2770	BM6045	BM6045
	2920	BM6045	BM6060
	3070	BM6045	BM6060
	3220	BM6060	BM6060
		BM6060	BM6060
		BM6060	BM6060
10 part (2x5) recessed multispan cover with 5 removable support beams		Note: For other pit clear opening sizes please refer to our technical department	



# GATIC® Composite

## Multispan Covers and Frames



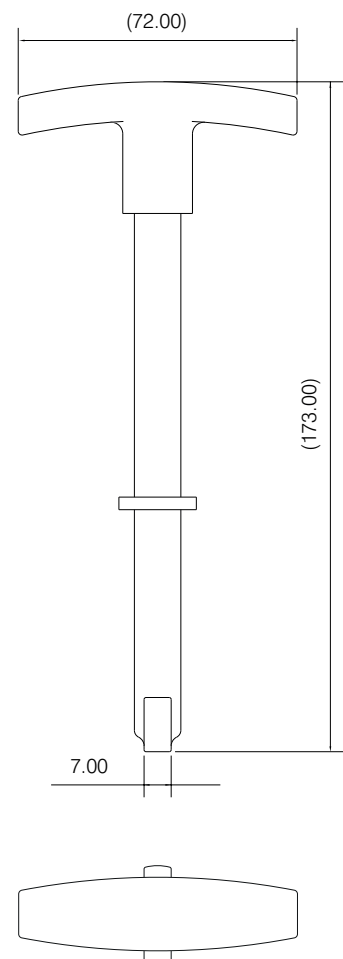
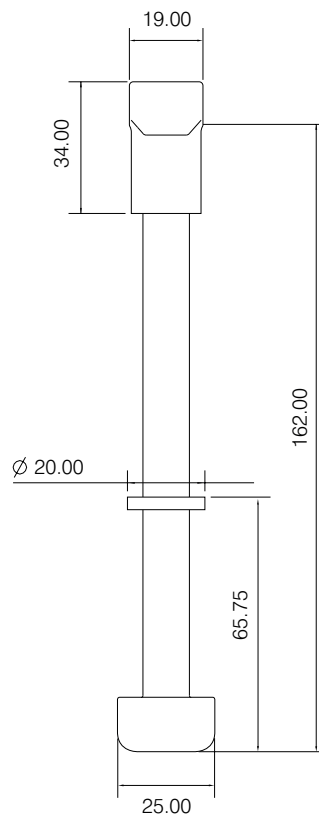




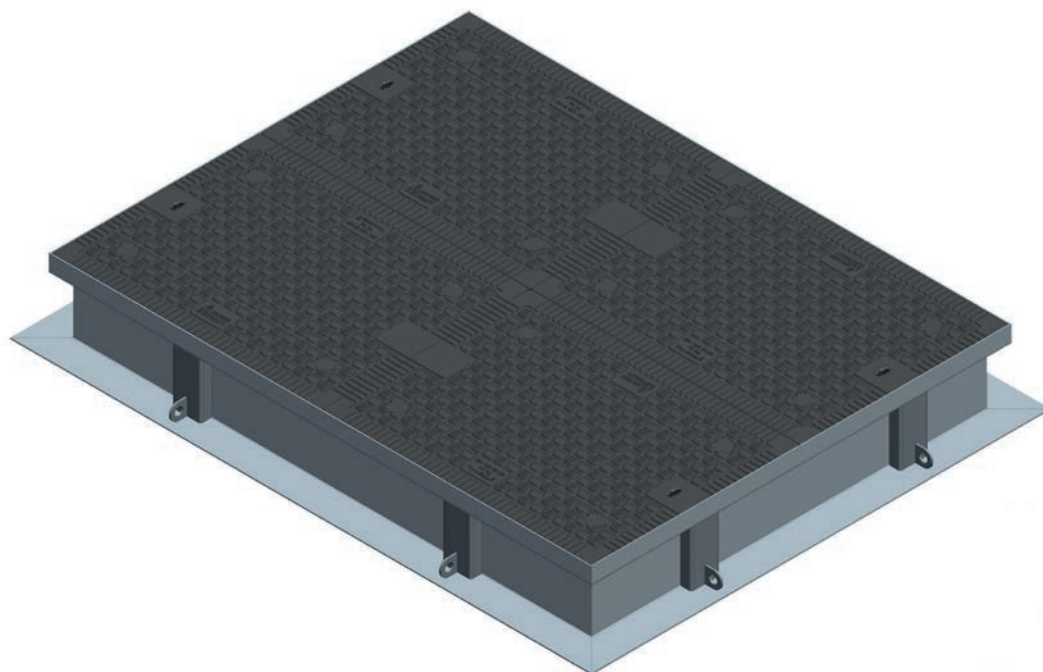
## GATIC® Composite Lifting Keys

Gatic composite access covers have two standard keys that can be used to remove or lift composite covers. There is short key which can be used for convenience for inspections and for carrying in a tool kit. Alternatively there is a long key which reduces the risk of operator injury when removing covers from a frame. Also available as an accessory is a foot pedal attachment which can be used in conjunction with the short key. When covers are sealed in position due to detritus, a quick press on the foot pedal breaks the seal and allows easy removal. Please contact Gatic for further information.

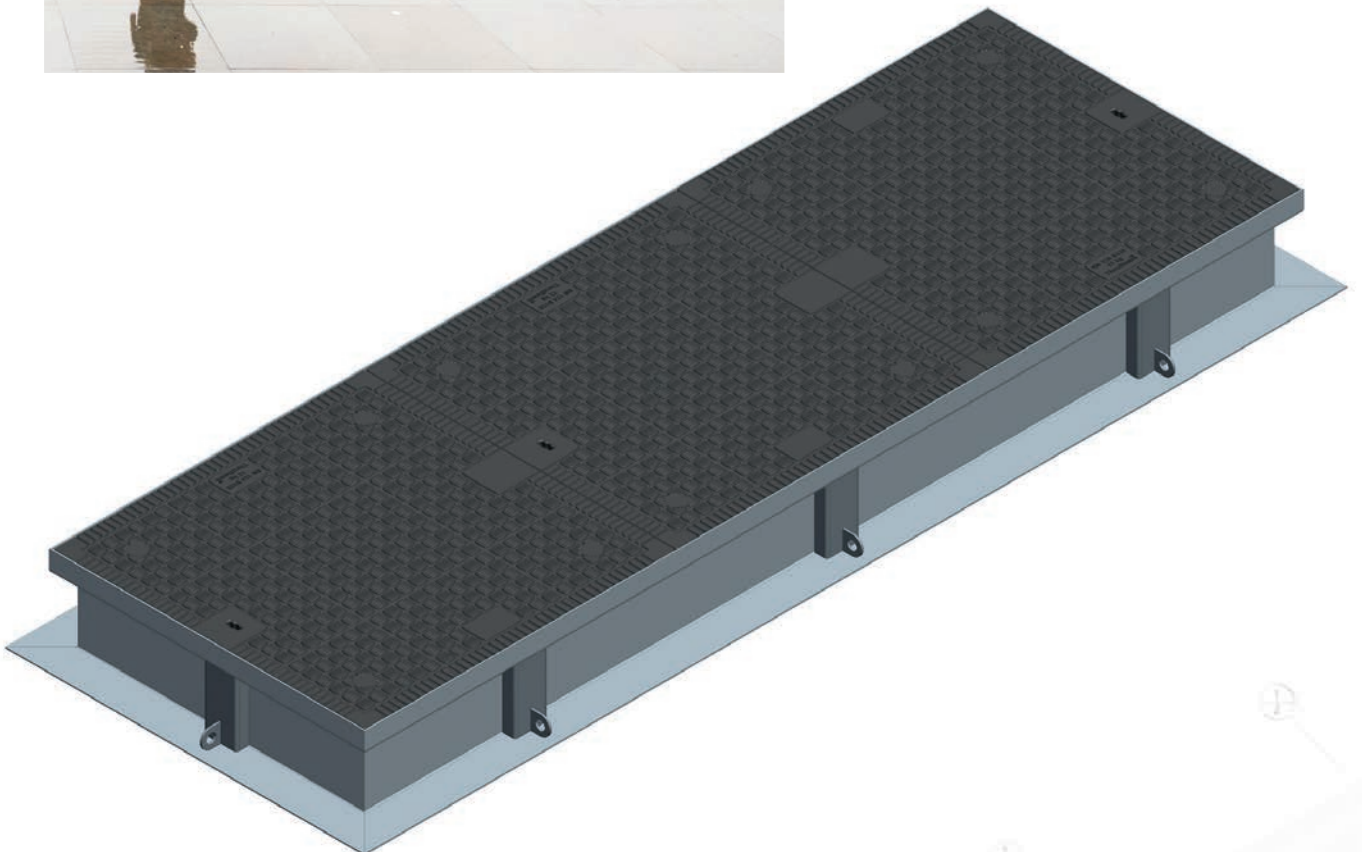
Note: all covers have a spring loaded lock which allows covers to be pushed back into the frame and the lock will automatically engage, reducing any risk of the covers being left unlocked.



## **GATIC®** Composite – Applications gallery









### Interactive Website

Our website is ultra user-friendly and offers full details of our Slotdrain surface water drainage systems, channel drainage and linear drainage. This includes features and benefits, sizes and load categories, as well as design service and contact information.

The website also contains dedicated Access Covers and StreetWise sections.



### LFA Brochure

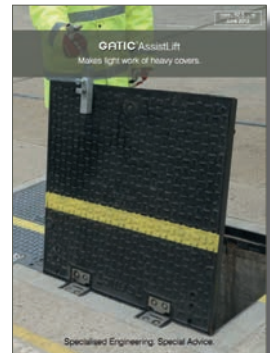
Gatic LFA covers mirror the Gatic Assist Lift range of covers, but are designed for applications where sealing of the cover is not required. They are manufactured in ductile iron with a choice of tops, providing uninterrupted access to the services below.

Gatic LFA covers facilitate one-person opening of F900 load-rated ductile iron covers, either as an individual cover or as part of a multi-cover arrangement.



### Assisted Lift Brochure

Illustrated literature covering our range of gas and airtight inspection covers with assisted opening for Loading Group F900.



### Access Covers Brochure

A detailed manual with full technical detail on the complete range of our access covers and frames for all loading groups.

The manual includes product selector guides and installation information.

Also available is complementary interactive software that allows you to design your own drainage system.

Register your details with us on the MyGatic section of our website; alternatively, register by phone or email.



**GATIC®**

**DRAINAGE & ACCESS COVERS**

Gatic, Poulton Close,  
Dover CT17 0UF  
England

Tel: +44 (0) 1304 203 545  
Fax: +44 (0) 1304 215 001  
Email: [info@gatic.com](mailto:info@gatic.com)  
Website: [www.gatic.com](http://www.gatic.com)

### Access Covers Product Selector Software

Our Gatic Access Covers Product Selector software can be sent to you on a USB at no cost. Simply register your details with us on the MyGatic section of our website, or by emailing/phoning us.



All reasonable care has been taken in the preparation of this brochure, all information, recommendations and guidance notes on the use of The Products are made without guarantee since the conditions of use are beyond the control of Alumasc Exterior Building Products Limited (The Company). The customer is responsible for ensuring that each product is fit for its intended purpose and that conditions for use are suitable. The information contained in this brochure and advice arising therefrom is free of charge and accordingly on the terms that no liability nor liability for negligence will attach to the Company or its servants in relation to any such service arising out of or in connection with this brochure. The Company pursues a policy of constant product development and information contained in this publication is therefore subject to change without notice.